

Airport information:

Country: Viet Nam

City: DA NANG

Coordinates: N 16° 02.6', E108 12.0

Elevation: 36

Customs: : H24

Fuel: Jet A1

RFF: CAT 8

hours: H24.

Runways:

Runway 17L

Takeoff length: 3500, Landing length: 3500

Runway 17R

Takeoff length: 3048, Landing length: 3048

Runway 35L

Takeoff length: 3048, Landing length: 3048

Runway 35R

Takeoff length: 3048, Landing length: 3048

AERODROME

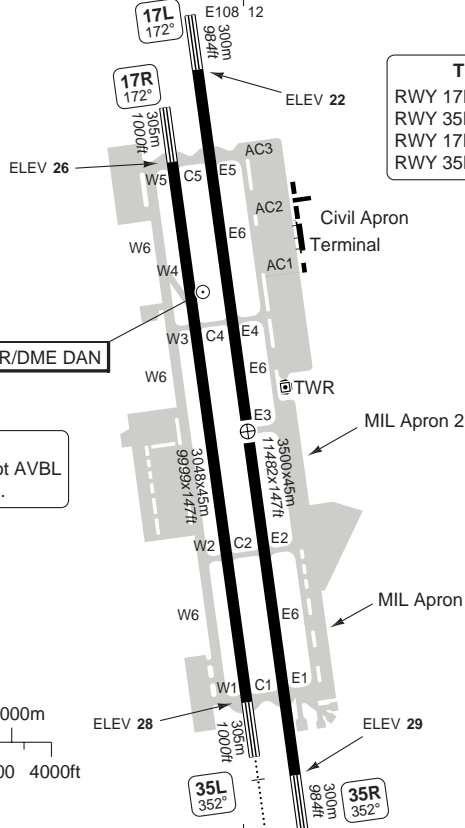
Da Nang GND
121.6
121.9TWR
118.35AD Elev **30** | ARP: N16 02.6 E108 12.0 | RFF: CAT 9 | AD HR: H24

E108 11

E108 12

E108 13

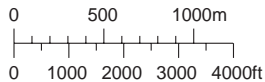
0



THR Coordinates

RWY 17L N16 03.6 E108 11.9
 RWY 35R N16 01.7 E108 12.2
 RWY 17R N16 03.4 E108 11.8
 RWY 35L N16 01.8 E108 12.0

NOTE
 RWY 35R / 17L Not AVBL
 for TKOF and LDG.

N16
03N16
02

RWY	Slope	TORA m/ft	LDA m/ft	ALS	REDL	Additional
17L	+0.1	3500 / 11482	3500 / 11482	-	-	-
35R	-0.1	3500 / 11482	3500 / 11482	-	-	-
17R	0	3048 / 10000	3048 / 10000	-	H 1 2	P
35L	0	3048 / 10000	3048 / 10000	L-E	H 1 2	P

① THL Blue ② White

STATE

TAKE OFF MINIMA

RWY	Facilities	RVR / Vis		
		A B	C	D
ALL a	-	500 m/0.6 km	550 m/0.7 km	550 m/0.8 km

a Alternate must be filed, otherwise use landing minima.

AERODROME

10 - 2

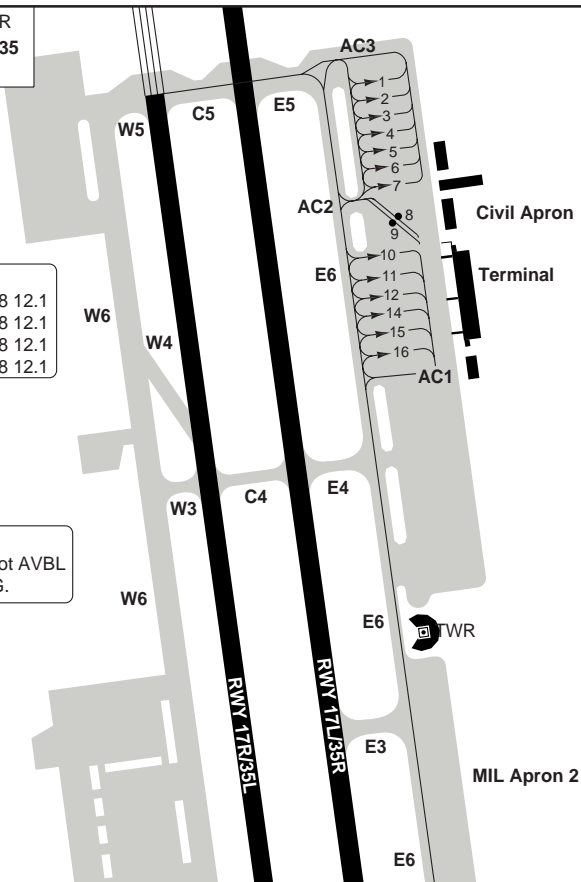
Da Nang GND	TWR
121.6	118.35
121.9	

Stand Coordinates

9	N16 03.3 E108 12.1
11	N16 03.2 E108 12.1
14	N16 03.2 E108 12.1
16	N16 03.1 E108 12.1

NOTE

RWY 35R / 17L Not AVBL
for TKOF and LDG.



GENERAL INFORMATION

1. TWY RESTRICTION

- 1.1 TWY E6 between E1-E2 not avbl for ACFT with wingspan more than 44m/144ft.
- 1.2 No TWL on E6 between E1-E3. 'Follow me' car available.
- 1.3 stands 1-16 ACFT MAX wingspan 34m/ 112ft
- 1.4 ACFT longer than 34m/ 112ft wingspan can park on stands 1-16 only when no ACFT parked both sides of the stands concerned

2. TAXI

- 2.1 Stands 1-7: Taxi-in via AC2, AC3 and out via AC3
Stands 8-9: Taxi-in via AC2 and out via AC2 after pushback out to TWY E6
Stands 10-16: Taxi-in via E6; pushed back to E6
- 2.2 For TKOF:
RWY 17R: APN - E6 - E5 - C5.
RWY 35L: APN - E6 - E1 - C1 or
APN - E6 - E2 - 0.5nm from
THR of RWY 35R - C1.

2.3 For LDG:

RWY 17R: RWY 17R - C1 - E1 - E6 - APN or
RWY 17R - C1 - 0.5nm from THR of
RWY 35R - E2 - E6 - APN.
RWY 35L: RWY35L - C5 - E5 - E6 - APN.

2.4 All ACFT are required to follow ATC instructions and Follow-me car strictly during Taxiing.

3. APRON

- 3.1 Stands 1-16 AVBL(stand 13 is not assigned) for:
- All ACFT with wingspan upto 34m/ 112ft.
- ACFT with wingspan 34m/ 112ft or more when no ACFT on the stand.
- ACFT A320 / 321 or equivalent and B777 / A330 when no ACFT on stand beside.
- 3.2 Stand 9 avbl for ACFT with wingspan upto 18m/ 59ft.
- 3.3 Stands 9, 11, 14 and 16 have been provided by visual docking guidance system.

RADAR Minimum Altitudes

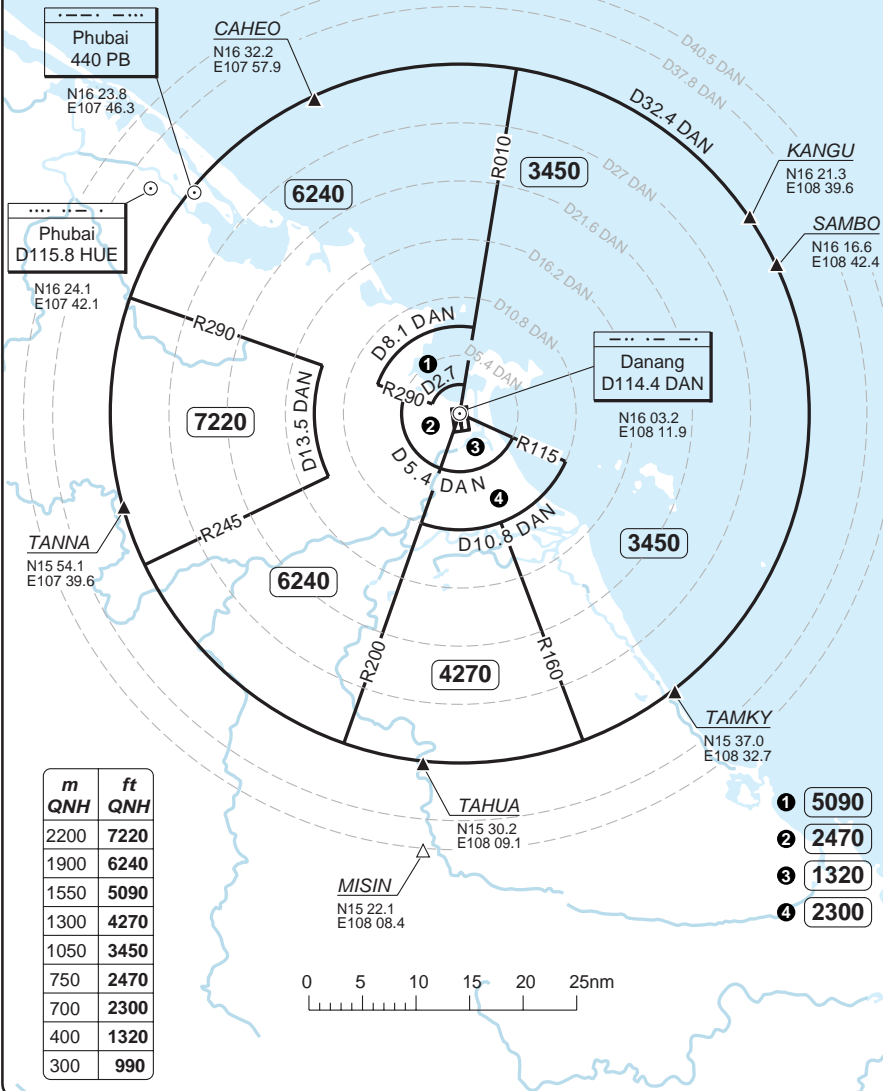
Da Nang APP	TWR	GND
125.3	118.35	121.6
119.5		121.9

TL 100 | AD Elev 30

Note

MOC value is **990** in the plain terrain.
MOC value is greater than **990** in the mountainous terrain.
The centre of radar vectoring area is DVOR/DME DAN.

20 - 1

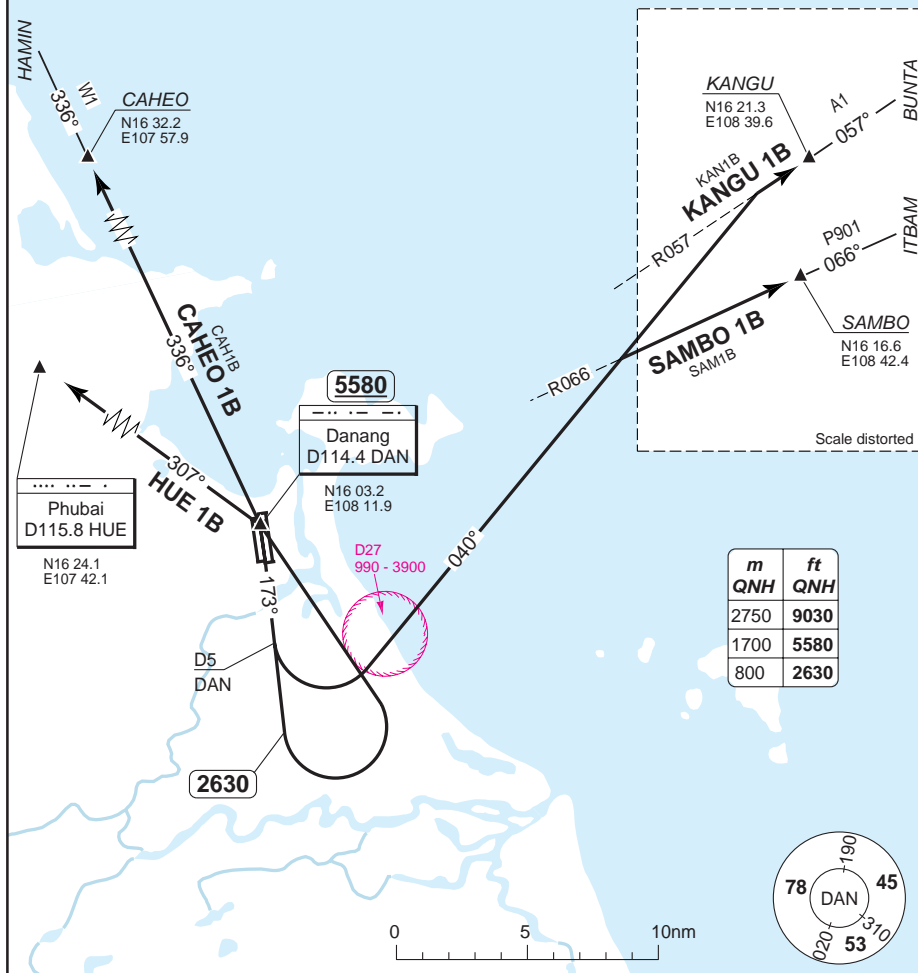


SID RWY 17L/R North, East

INTL DA NANG

Da Nang GND	TWR	APP
121.6	118.35	125.3
121.9		119.5

TA 9030 | AD Elev 30



30 - 1

MNM CLIMB GRADIENT: 5%.

SID	Routeing	Altitudes
CAHEO 1B	Climb on 173° to 2630 - turn left - DAN - intcp R336 DAN - CAHEO.	DAN MNM 5580
HUE 1B	Climb on 173° to 2630 - turn left - DAN - intcp R307 DAN - HUE.	DAN MNM 5580
KANGU 1B	Climb on 173° - at D5 DAN turn left - 040° - intcp R057 DAN - KANGU.	
SAMBO 1B	Climb on 173° - at D5 DAN turn left - 040° - intcp R066 DAN - SAMBO.	

Change: Completely revised

THIS CHART IS A PART OF NAVIGRAPH NDAC AND IS INTENDED FOR FLIGHT SIMULATION USE ONLY

SID RWY 17L/R South, West

Da Nang GND	TWR	APP
121.6	118.35	125.3
121.9		119.5

TA 9030 AD Elev 30

5580

Danang
D114.4 DANN16 03.2
E108 11.9TANNA 1B
TAN1BTANNA
N15 54.1
E107 39.6

PAPRA

A1

255°

-255°

D5
DAN

2630

TAHUA 1B
TAHU1BD10
DAND27
990 - 3900D28
990 - 3900

4930

R173/D17 DAN

TAMKY 1B
TAM1BTAMKY
N15 37.0
E108 32.7R13
300 - FL262

186°

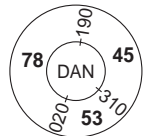
TAHUA
N15 30.2
E108 09.1

W1

186°

Pleiku 113.4 PLK

0 5 10nm



SID	MNM Climb	Routeing	Altitude
TAHUA 1B	5%	Climb on 173° - at D17 DAN turn right - intcp R186 DAN - TAHUA.	D17 DAN MNM 4930
TAMKY 1B	4.1%	Climb on 173° - at D5 DAN turn left - intcp R144 DAN - D10 DAN - TAMKY.	
TANNA 1B	5%	Climb on 173° to 2630 - turn left - DAN - intcp R255 DAN - TANNA.	DAN MNM 5580

Change: Completely revised

THIS CHART IS A PART OF NAVIGRAPH NDAC AND IS INTENDED FOR FLIGHT SIMULATION USE ONLY

THIS CHART IS A PART OF NAVIGRAPH NDAC AND IS INTENDED FOR FLIGHT SIMULATION USE ONLY

© Navtech - vvdn03daorg0

Da Nang GND	TWR	APP
121.6	118.35	125.3
121.9		119.5

TA 9030 AD Elev 30

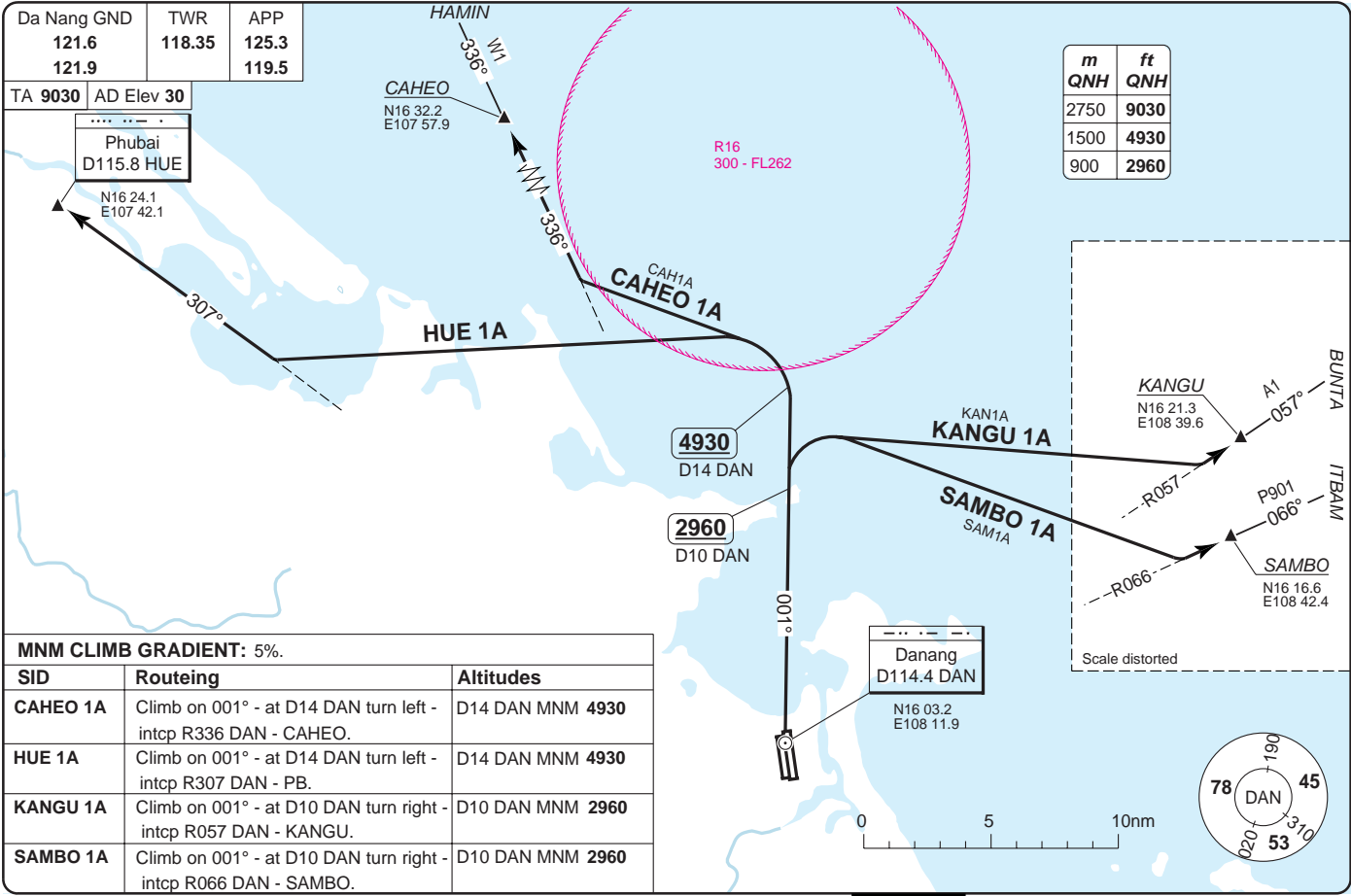
Phubai
D115.8 HUE

N16 24.1
E107 42.1

CAHEO
N16 32.2
E107 57.9

R16
300 - FL262

m	ft
QN	HN
2750	9030
1500	4930
900	2960



MNM CLIMB GRADIENT: 5%.

SID	Routeing	Altitudes
CAHEO 1A	Climb on 001° - at D14 DAN turn left - intcp R336 DAN - CAHEO.	D14 DAN MNM 4930
HUE 1A	Climb on 001° - at D14 DAN turn left - intcp R307 DAN - PB.	D14 DAN MNM 4930
KANGU 1A	Climb on 001° - at D10 DAN turn right - intcp R057 DAN - KANGU.	D10 DAN MNM 2960
SAMBO 1A	Climb on 001° - at D10 DAN turn right - intcp R066 DAN - SAMBO.	D10 DAN MNM 2960

SID Rwy 35L/R North, East

30 - 3 25 JUL 12

INTL DA NANG

Vietnam - VVDN / DAD

SID RWY 35L/R South, West

Da Nang GND	TWR	APP
121.6	118.35	125.3
121.9		119.5

TA 9030	AD Elev
30	

m	ft
QNH	QNH
2750	9030
1700	5580
900	2960

2960
D10 DAN

5580

Danang
D114.4 DAN

N16 03.2
E108 11.9

P3
Danang City
4900

TANNA
N15 54.1
E107 39.6

255°
TANNA 1A
TANNA

PAPRA
A1

R12
5900 - FL262

186°
TAHUUA 1A
TAHUUA

144°
TAMKY 1A
TAMKY

R13
300 - FL262

TAHUUA
N15 30.2
E108 09.1



Pleiku D113.4 PLK

MM CLIMB GRADIENT: 5%.

SID	Routing	Altitudes
(INITIAL CLIMB)	Climb on 001° - at D10 DAN turn right - DAN - then follow SID.	D10 DAN MNM 2960 DAN MNM 5580
TAHUUA 1A	Intcp R186 DAN - TAHUUA.	
TAMKY 1A	Intcp R144 DAN - TAMKY.	
TANNA 1A	Intcp R255 DAN - TANNA.	

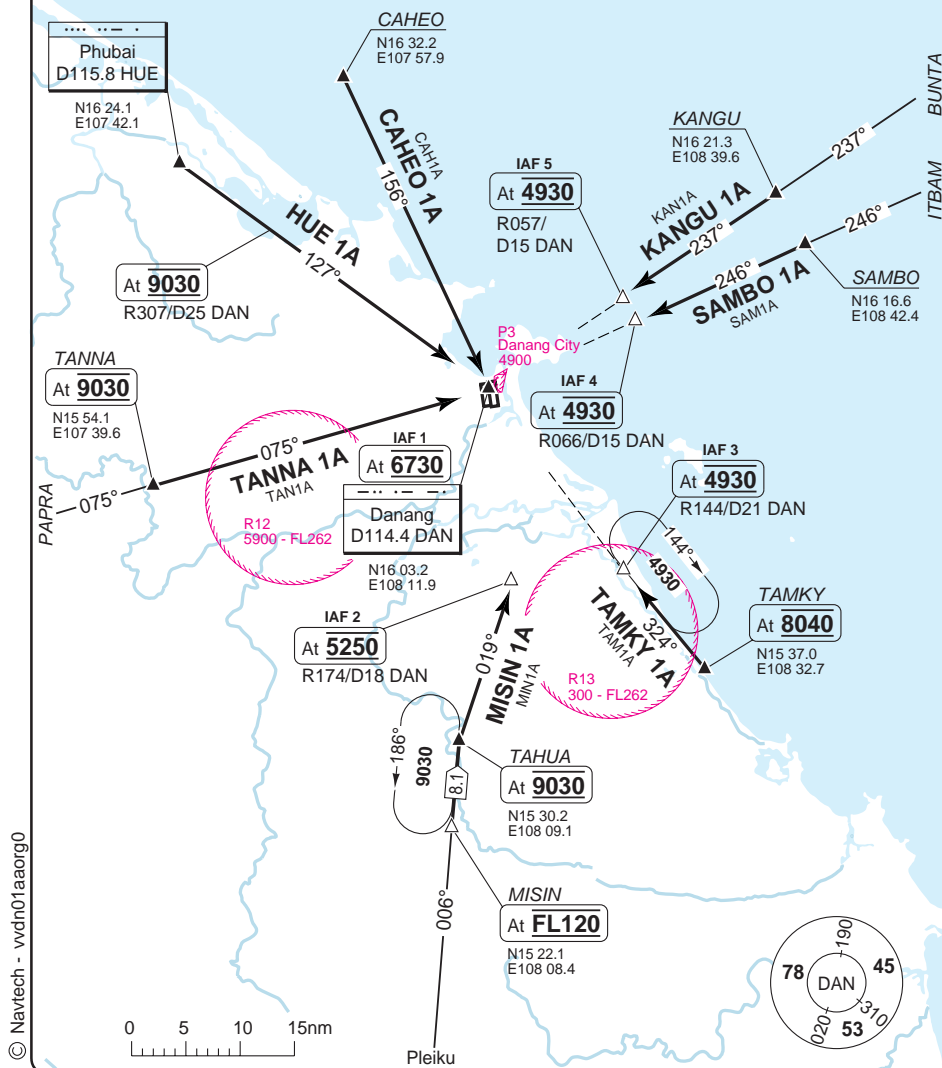
Change: Completely revised

STAR RWY 35L/R A-STAR

INTL DA NANG

Da Nang APP	TWR	GND
125.3	118.35	121.6
119.5		121.9
TL 100	AD Elev 30	

m	ft
QNH	QNH
2750	9030
2450	8040
2050	6730
1600	5250
1500	4930



STAR RWY 35L/R VOR

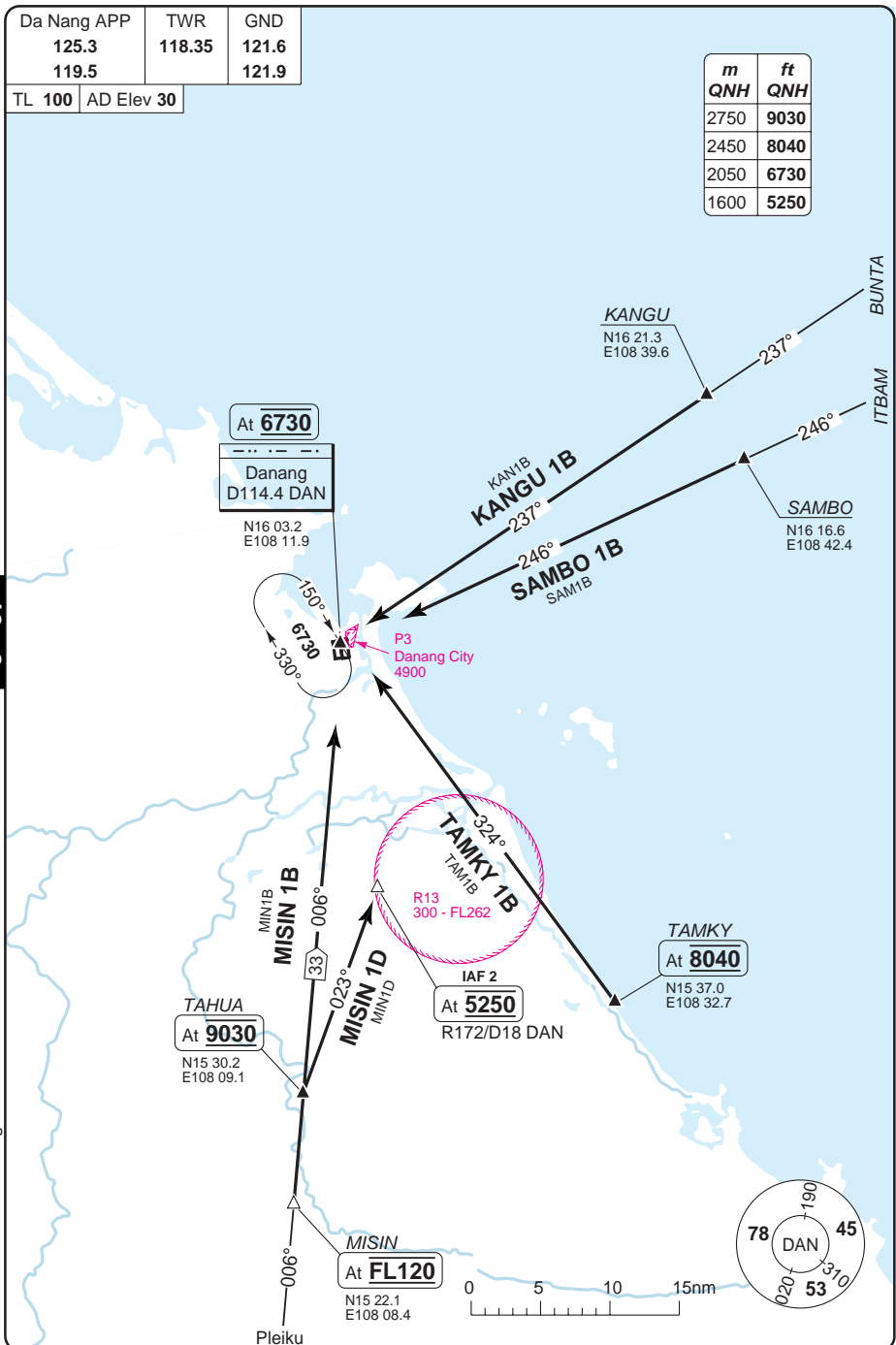
Da Nang APP	TWR	GND
125.3	118.35	121.6
119.5		121.9

TL 100	AD Elev 30
--------	------------

<i>m</i> QNH	<i>ft</i> QNH
2750	9030
2450	8040
2050	6730
1600	5250

40 - 2

© Navtech - wdn02aorg0



Change: Completely revised

THIS CHART IS A PART OF NAVIGRAPH NDAC AND IS INTENDED FOR FLIGHT SIMULATION USE ONLY

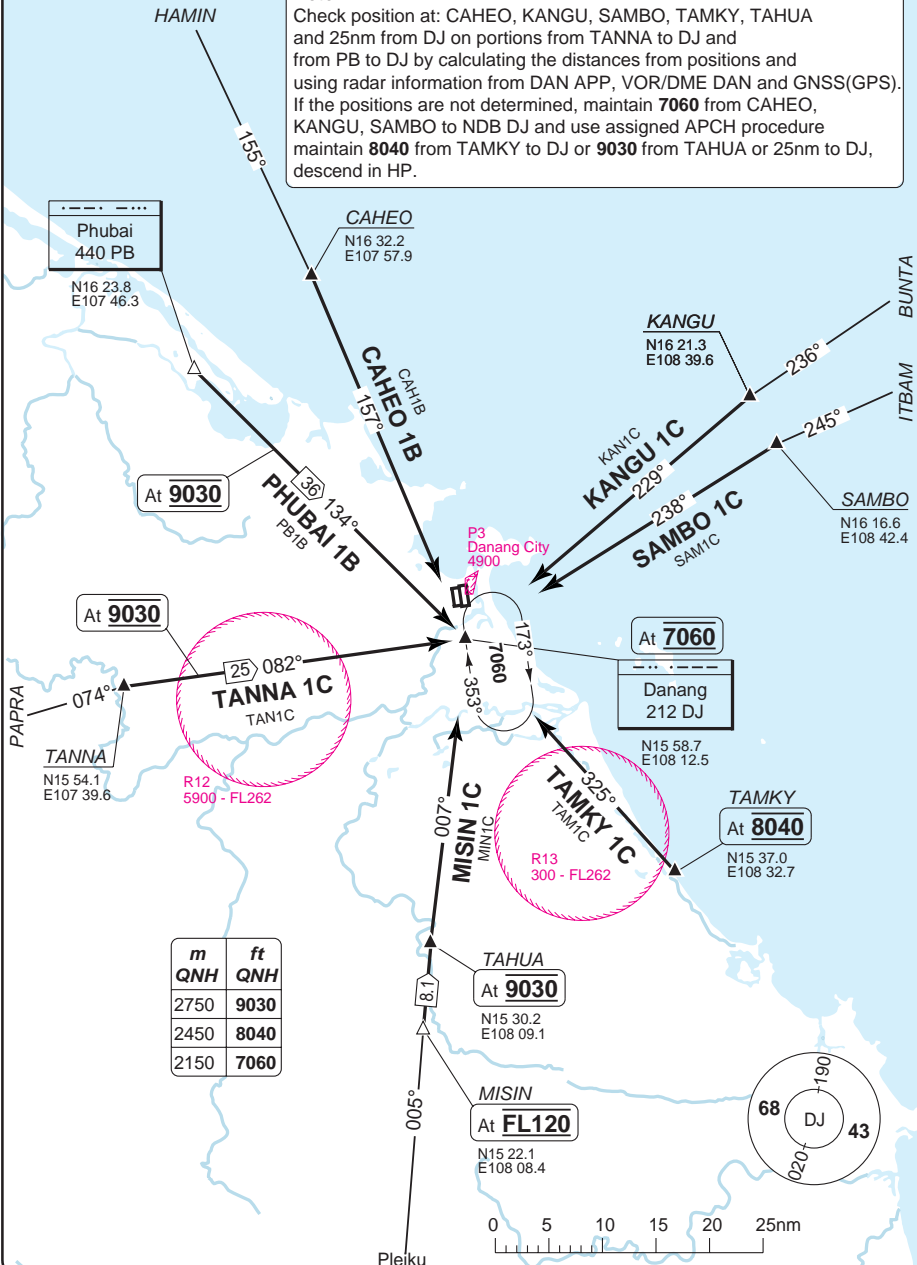
STAR RWY 35L NDB

Da Nang APP	TWR	GND
125.3	118.35	121.6
119.5		121.9

TL 100 AD Elev 30

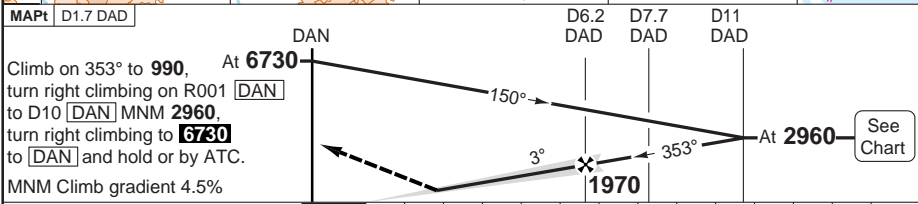
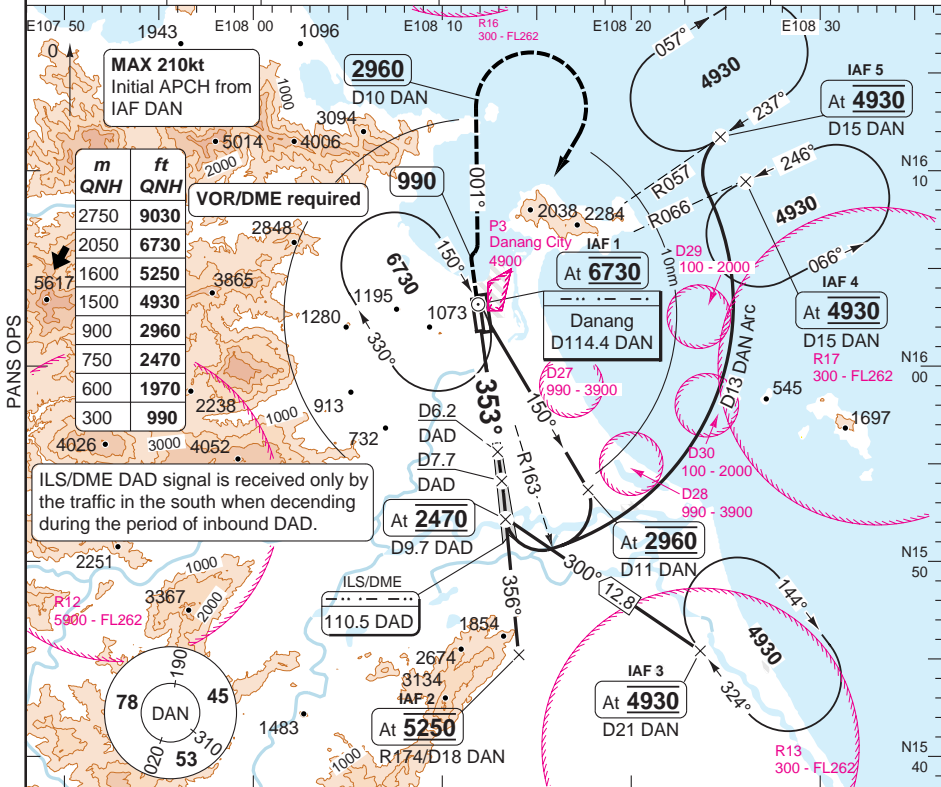
Note

Check position at: CAHEO, KANGU, SAMBO, TAMKY, TAHUA and 25nm from DJ on portions from TANNA to DJ and from PB to DJ by calculating the distances from positions and using radar information from DAN APP, VOR/DME DAN and GNSS(GPS). If the positions are not determined, maintain **7060** from CAHEO, KANGU, SAMBO to NDB DJ and use assigned APCH procedure maintain **8040** from TAMKY to DJ or **9030** from TAHUA or 25nm to DJ, descend in HP.



ILS Y RWY 35L

Da Nang APP	TWR	GND				
125.3	118.35	121.6				
119.5		121.9				
ILS 110.5 DAD	FAT 353°	THR Elev 28 1hPa	AD Elev 30 1hPa	TL 100	TA 9030	



ACFT	ILS+DME a b	LOC+DME a	Circling c				
A	230 (200)	530 (495)	1580 (1545)				
B	1000m	2.1km	4.0km				
C	△	530 (495)	2240 (2201)				
D	240 (207)	530 (495)	N/A				
	1000m	2.8km					
GS	80	100	120	140	160		
ROD 3.0°	420	530	630	740	840		
FAF- MAPt	3:27	2:46	2:18	1:58	1:43		

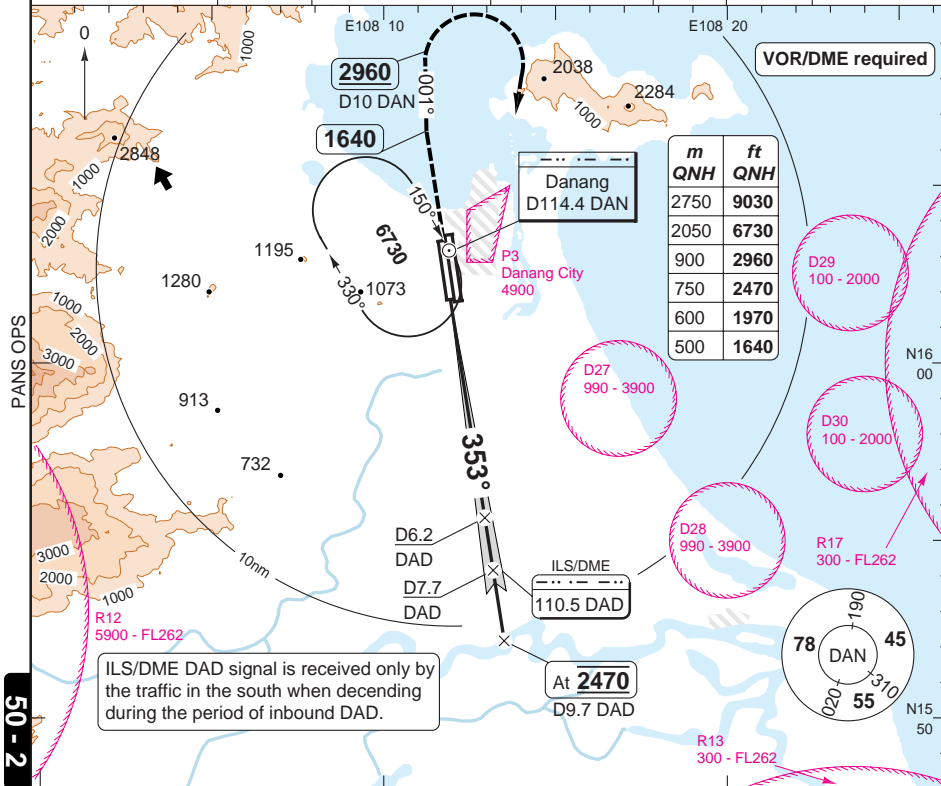
a 4.5% MNM MISAP climb gradient	DME 3.0°	LDA 3048x45
b Values shown are RVR/VIS	DAD ALT	9999x147ft
c East of RWY only HJ only	6.2 1970	P
△ ILS/DME: 220ft	6 1910	
△ LOC/DME: 560ft	5 1600	
△ Circling: Cat A,B: 1580ft	4 1280	
Cat C: 2240ft	3 970	
	2 650	
	1.6 530	

BALS

ILS Z_{RWY} 35L

Da Nang APP	TWR	GND
125.3	118.35	121.6
119.5		121.9

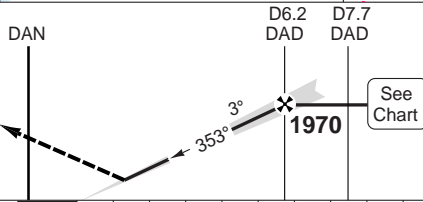
ILS/DME 110.5 DAD	FAT 353°	THR Elev 28 1hPa	AD Elev 30 1hPa	TL 100	TA 9030
--------------------------	-----------------	-------------------------	------------------------	---------------	----------------










MAPt	1.7 DAD
------	---------

Climb on 353° to **1640**, continue climbing on 001° to **2960**, at D10 turn right climbing to **6730** to **DAN** HP or by ATC.

MNM Climb gradient 4.5%



TCH 49

ACFT		ILS+DME a b		LOC+DME a			Circling c		
STATE	A	230 (200) 1000m		530 (495) 2.1km			1580 (1545) 4.0km		
	B								
	C			530 (495) 2.4km 			2240 (2201) 5.0km 		
	D	240 (207) 1000m 		530 (495) 2.8km 			N/A		
GS		80	100	120	140	160			
ROD 3.0°		420	530	630	740	840			
FAF- MAPT		3:27	2:46	2:18	1:58	1:43			

a 4.5% MNM

MISAP climb gradient

b Values shown are

⑤ Values shown are
RVR/VIS


C East of RWY only

East of RW 1 only
HJ only

△ C ILS/DME: 220ft

LOG/DME: 560ft

LOC/DME: 560ft

 Circling: Cat A,B: 158

Cat C: 2240

DME DAD	3.0° ALT
6.2	1970
6	1910
5	1600
4	1280
3	970
2	650
1.6	530

LDA 3048x45
9999x147ft

P

■

1

1

1

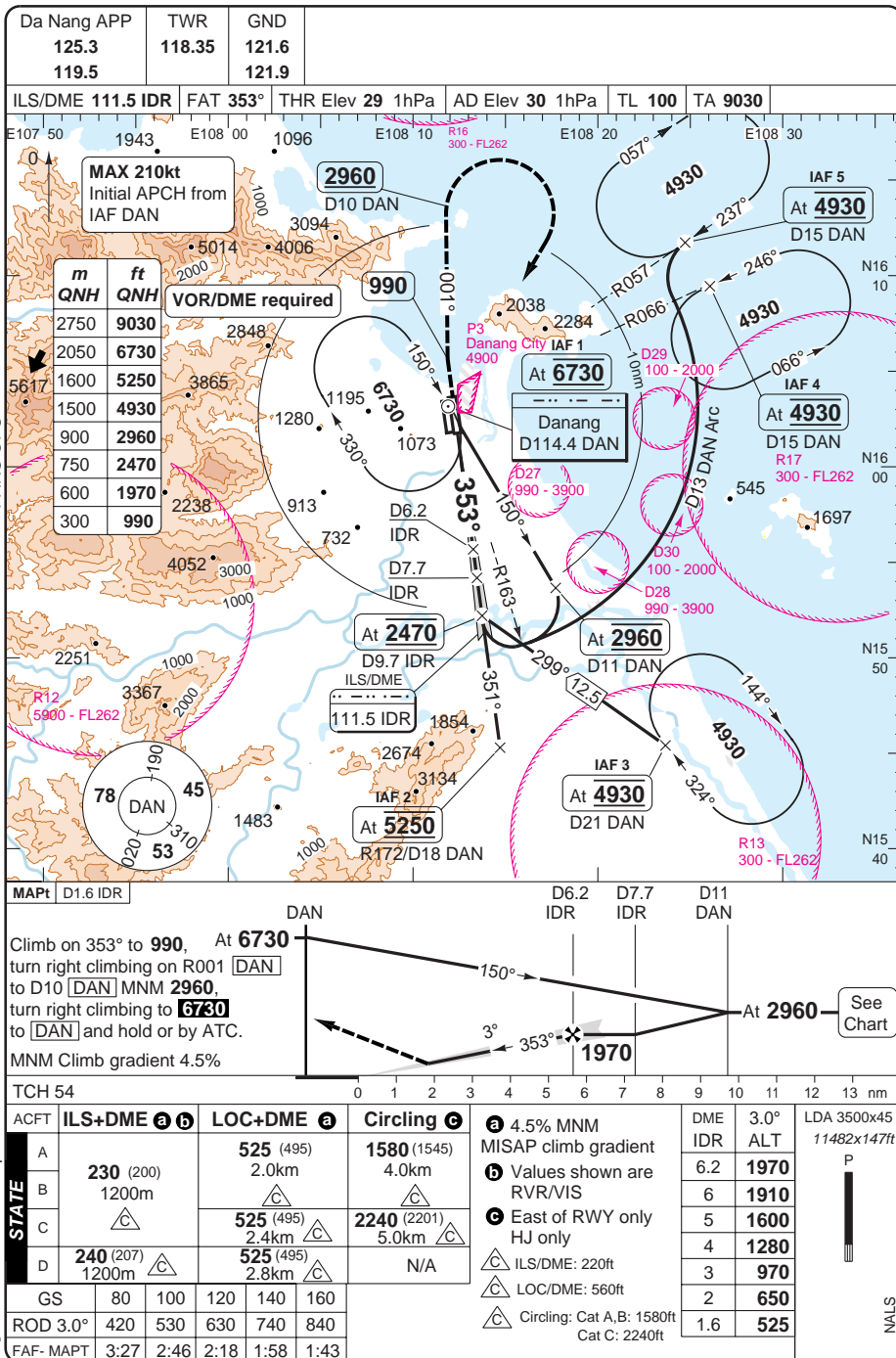
...

 \vdots
$$\vdots$$

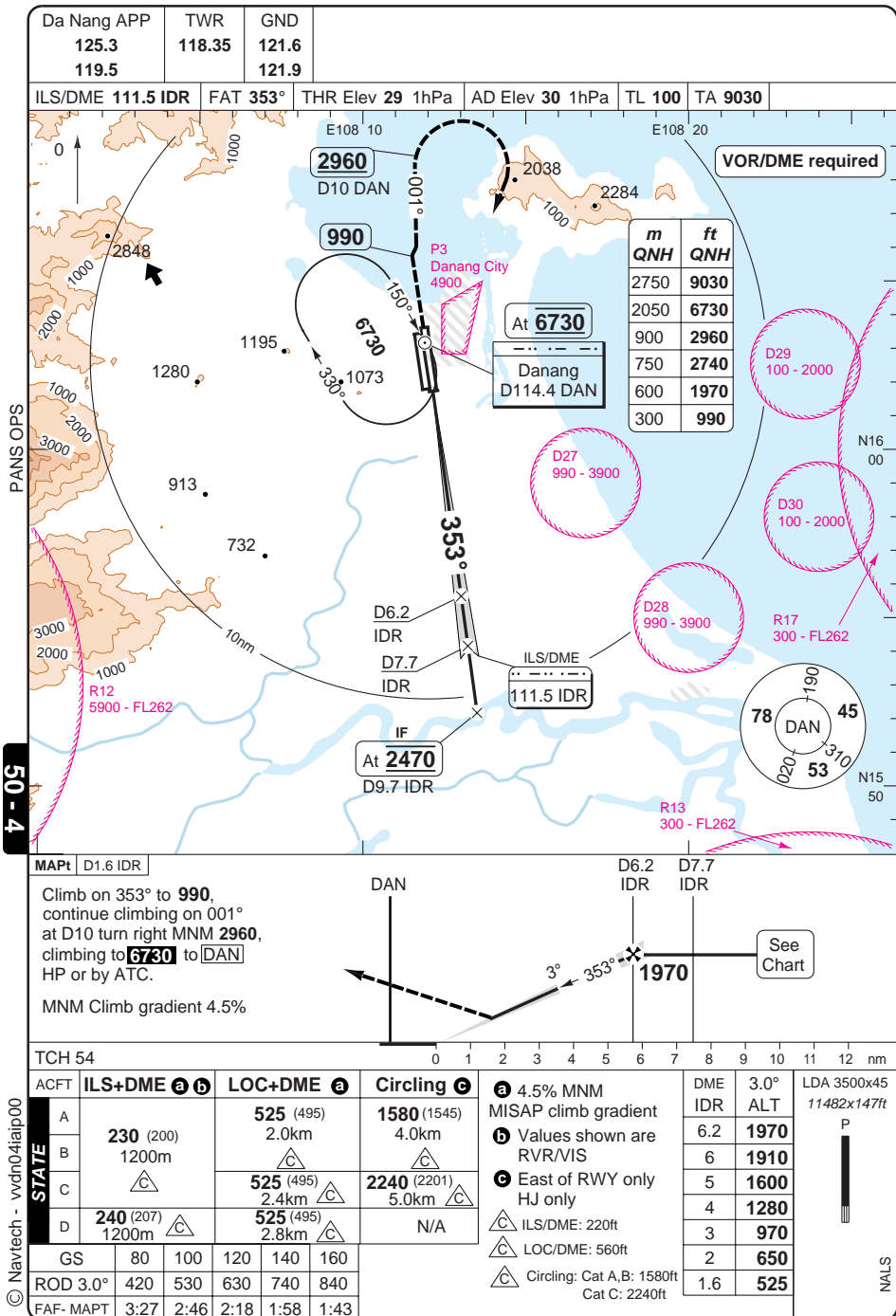
.....

BALS

ILS Y RWY 35R



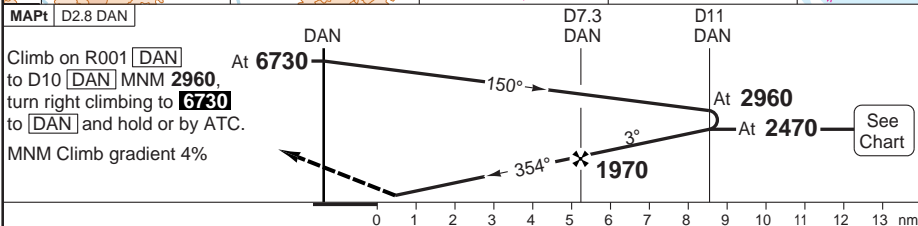
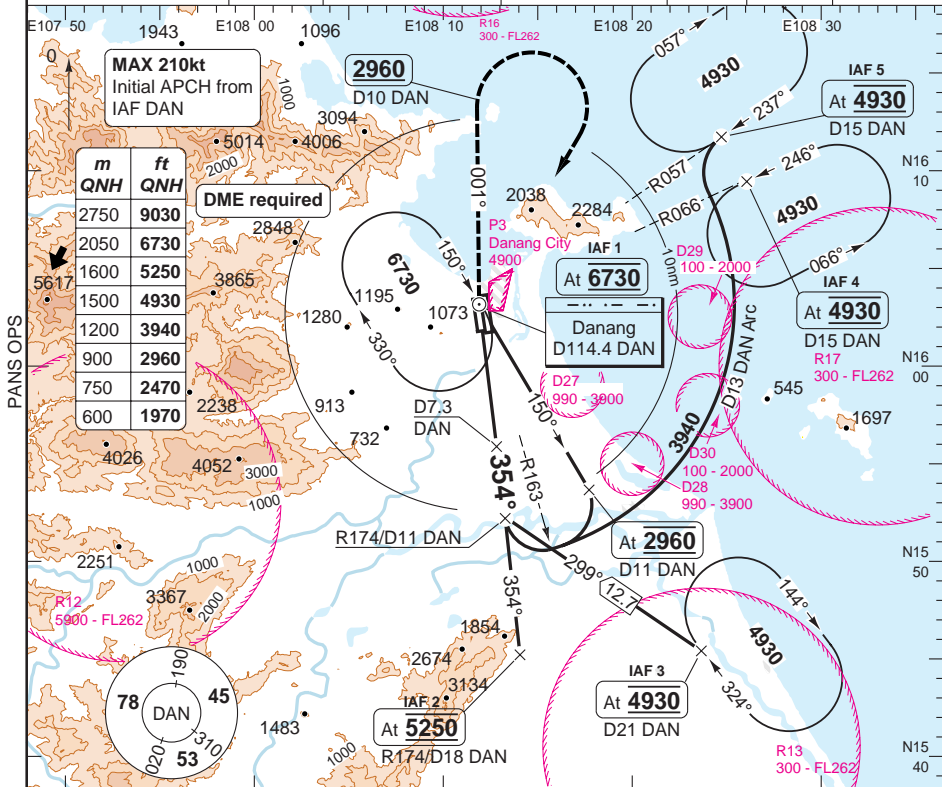
ILS Z RWY 35R



VOR RWY 35L

Da Nang APP	TWR	GND
125.3	118.35	121.6
119.5		121.9

VOR/DME	114.4 DAN	FAT 354°	THR Elev 28 1hPa	AD Elev 30 1hPa	TL 100	TA 9030
---------	-----------	----------	------------------	-----------------	--------	---------



ACFT	VOR+DME a	Circling b	a 4.0% MNM MISAP climb gradient	b East of RWY only HJ only	DME DAN	3° ALT	LDA 3048x45 9999x147ft
A	530 (495) 2.1km	1580 (1545) 4.0km			7.3	1970	
B					7	1880	
C	530 (495) 2.4km	2240 (2220) 5.0km			6	1560	
D	530 (495) 2.8km	NA			5	1240	
					4	920	
					3	600	
					2.8	530	

Change: Completely revised, renumbered

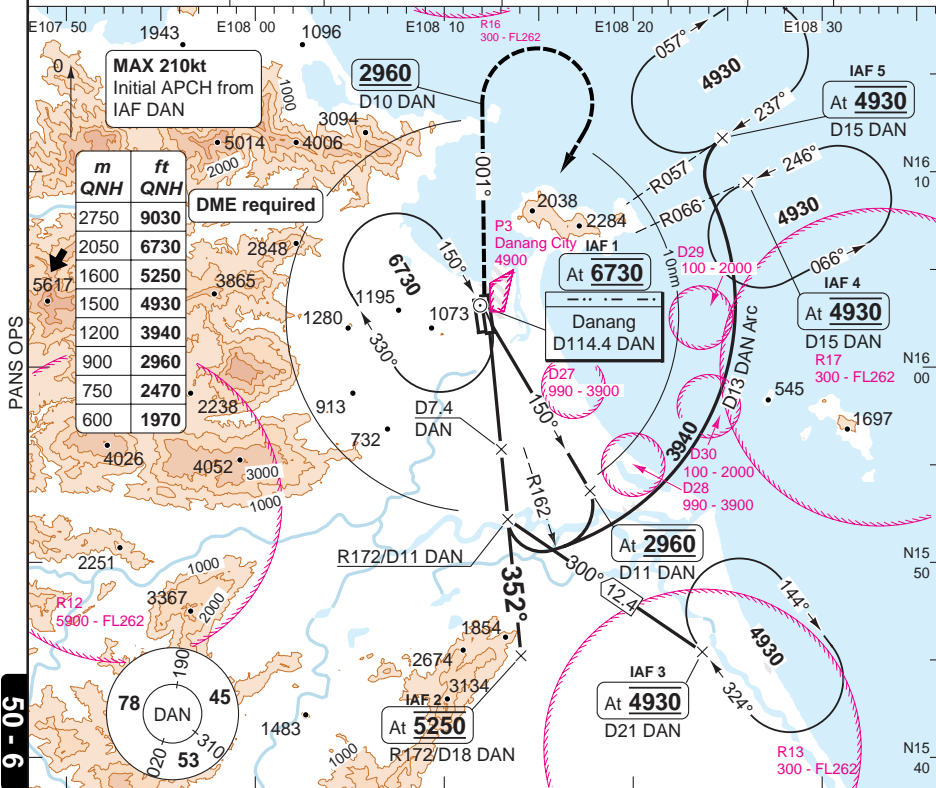
THIS CHART IS A PART OF NAVIGRAPH NDAC AND IS INTENDED FOR FLIGHT SIMULATION USE ONLY

VOR _{RWY} 35R

INTL DA NANG

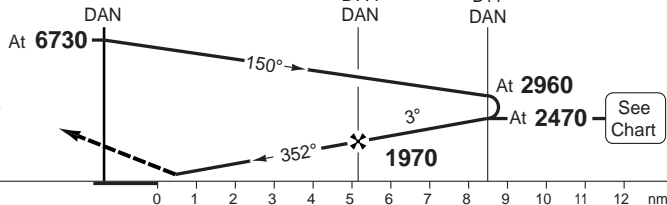
Da Nang APP	TWR	GND	
125.3	118.35	121.6	
119.5		121.9	



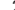


VOR/DME 114.4 DAN	FAT 352°	THR Elev 29 1hPa	AD Elev 30 1hPa	TL 100	TA 9030	
--------------------------	-----------------	-------------------------	------------------------	---------------	----------------	--





MAPt	D2.9 DAN
------	----------


Climb on R001 **DAN**
to D10 **DAN** MNM **2960**,
turn right climbing to **6730**
to **DAN** and hold or by ATC.
MNM Climb gradient 4%



ACFT	VOR+DME a	Circling b
A	530 (495) 2.1km	1580 (1545) 4.0km
B		
C	530 (495) 2.4km 	2240 (2220) 5.0km 
D	530 (495) 2.8km 	NA

a 4.0% MNM MISAP climb gradient
b East of RWY only
HJ only

 VOR+DME: 560ft
 Circling: Cat A/B: 1580ft
Cat C: 2240ft

DME DAN	3° ALT	LDA 3500x45 11482x147ft
7.4	1970	
7	1850	
6	1530	
5	1220	
4	900	
3	590	
2.8	530	

NALS

© Navtech - wdn06iaip00

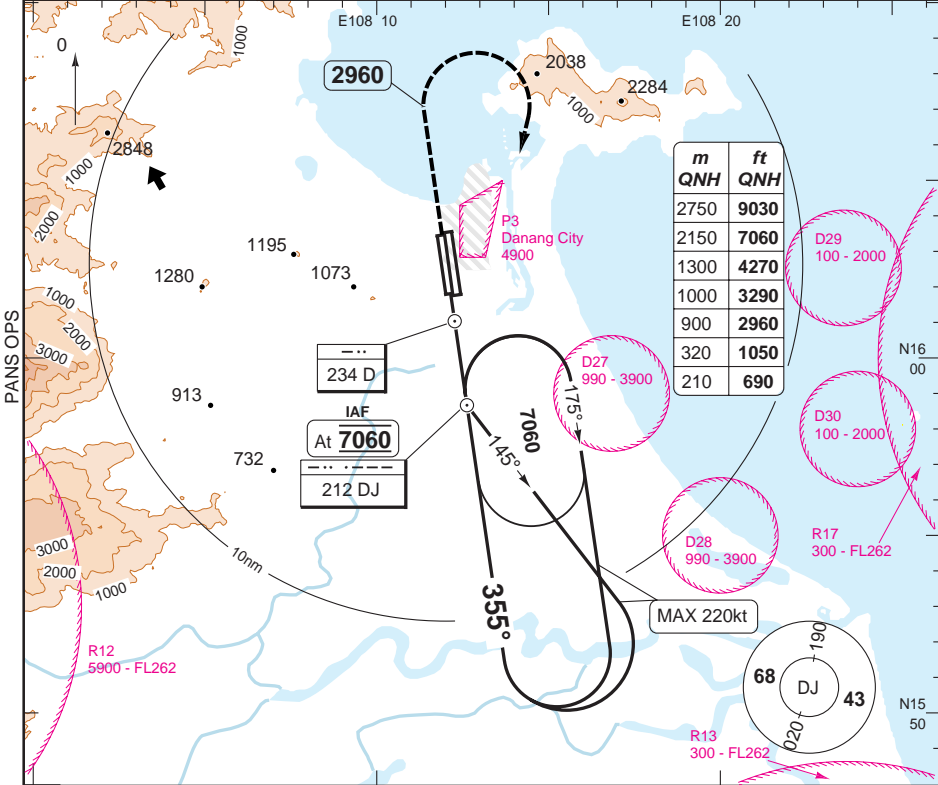
Change: New

THIS CHART IS A PART OF NAVIGRAPH NDAC AND IS INTENDED FOR FLIGHT SIMULATION USE ONLY

NDB RWY 35L

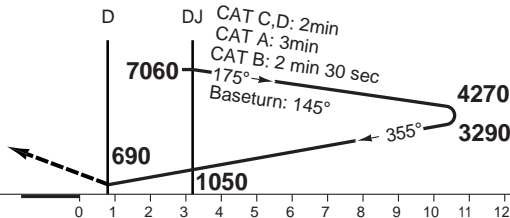
Da Nang APP	TWR	GND
125.3	118.35	121.6
119.5		121.9

NDB 212 DJ	FAT 355°	THR Elev 28 1hPa	AD Elev 30 1hPa	TL 100	TA 9030
------------	----------	------------------	-----------------	--------	---------



MAPt D

Climb on 355° to **2960**,
turn right climbing to **7060**
to **DJ** and hold or by ATC.
MNM Climb gradient 4%



ACFT	NDB a	Circling b c
A	690 (659) 2.4km	1410 (1365) 4.0km
B		1410 (1365) 5.0km
C	690 (659) 3.2km	1950 (1906) 6.0km
D	690 (659) 4.0km	2470 (2341) 6.0km

- a 4.0% MISAP MNM climb gradient
- b East of RWY only
- c N/A at night

LDA 3048x45
9999x147ft

P



BALS
Reverse side blank

NDB: 689ft (HN)

Circling: Cat A/B: 1560ft, Cat C 2240ft

Change: AD Elev, renumbered

JAR-OPS Landing Minima

INTL DA NANG

The following Minima is for Public Transport aircraft and conforms to JAR-OPS1 regulations.

STRAIGHT-IN APPROACH		C				D			
R/W	Procedure	DA/ MDA QNH ft	DH/ MDH QFE ft	Vis m	Vis No ALS m	DA/ MDA QNH ft	DH/ MDH QFE ft	Vis m	Vis No ALS m
35L	ILS/DME (M/App 4%)(1)	250	220	800	1000	250	220	800	1000
35L	LOC/DME (M/App 4%)(2)	500	470	2400	2400	500	470	2800	2800
35L	VOR/DME (3)	590	570	3200	3200	590	570	3600	3600
35L	2 NDB (M/App 4%)(4)	690	660	3200	3200	690	660	4000	4000

Notes:

- (1) Ceiling: 220 ft.
- (2) Ceiling: 500 ft.
- (3) Ceiling: 560 ft (HJ), 600 ft (HN).
- (4) Ceiling: 660 ft (HJ), 690 ft (HN).

CIRCLING		C			D		
R/W	Procedure	MDA QNH ft	MDH QFE ft	Vis m	MDA QNH ft	MDH QFE ft	Vis m
35L	ILS/DME, LOC/DME (1)(3)	1940	1900	5000	N/A	N/A	N/A
35L	VOR/DME (1)(2)(4)	1950	1910	6000	2470	2440	6000
35L	NDB (1)(2)(4)	1950	1910	6000	2470	2440	6000

Notes:

- (1) East of runway only.
- (2) Ceiling: Cat A 1480 ft; Cat B 1970 ft; Cat C, D 2630 ft.
- (3) Ceiling: Cat A, B 1420 ft; Cat C 1970 ft.
- (4) NA at night.

TAKE-OFF		C		D	
Runway	Facilities	RVR	Vis	RVR	Vis
17R/35L (1)	-	-	1500	-	2000

Notes:

- (1) Alternate must be filed, otherwise use landing minima.

JAR-OPS Landing Minima

INTL DA NANG

The following Minima is for Public Transport aircraft and conforms to JAR-OPS1 regulations.

STRAIGHT-IN APPROACH		A				B			
R/W	Procedure	DA/ MDA QNH ft	DH/ MDH QFE ft	Vis m	Vis No ALS m	DA/ MDA QNH ft	DH/ MDH QFE ft	Vis m	Vis No ALS m
35L	ILS/DME (M/App 4%)(1)	250	220	800	1000	250	220	800	1000
35L	LOC/DME (M/App 4%)(2)	500	470	2000	2000	500	470	2000	2000
35L	VOR/DME (3)	590	570	2400	2400	590	570	2400	2400
35L	2 NDB (M/App 4%)(4)	690	660	2400	2400	690	660	2400	2400

Notes:

- (1) Ceiling: 220 ft.
 (2) Ceiling: 500 ft.
 (3) Ceiling: 560 ft (HJ), 600 ft (HN).
 (4) Ceiling: 660 ft (HJ), 690 ft (HN).

CIRCLING		A			B		
R/W	Procedure	MDA QNH ft	MDH QFE ft	Vis m	MDA QNH ft	MDH QFE ft	Vis m
35L	ILS/DME, LOC/DME (1)(3)	1400	1360	4000	1400	1360	4000
35L	VOR/DME (1)(2)(4)	1410	1370	4000	1410	1370	5000
35L	NDB (1)(2)(4)	1410	1370	4000	1410	1370	5000

Notes:

- (1) East of runway only.
 (2) Ceiling: Cat A 1480 ft; Cat B 1970 ft; Cat C, D 2630 ft.
 (3) Ceiling: Cat A, B 1420 ft; Cat C 1970 ft.
 (4) NA at night.

TAKE-OFF		A		B	
Runway	Facilities	RVR	Vis	RVR	Vis
17R/35L (1)	-	-	1000	-	1000

Notes:

- (1) Alternate must be filed, otherwise use landing minima.